



ROCO9 LTD. 205A
CONCESSION RD
CROSSMAGLEN NEWRY

BT35 9JD

Helping you better
understand The
RYDER 1000.

Sales Guidelines

ROCO RYDER 1000

SALES GUIDELINES 2025





ROCO9 LTD. 205A
CONCESSION RD
CROSSMAGLEN NEWRY

BT35 9JD

Sales Guidelines

TABLE OF CONTENTS

Features and Benefits	01
Chassis Build	02
Hopper System	03
Feeder System	04
Crushing Chamber	05-06
Crusher Technical	07
Product/Discharge Conveyor	08
Radial Fines conveyor	09
Overband Magnet	10
Power Unit	11-12
Deployment / Hydraulic Powerpack	13
Operator Controls	14-15
Standard Specification	16
Optional Extras	17
Technical Dimensions	18
Competitive Analysis	19



ROCO9 LTD. 205A
CONCESSION RD
CROSSMAGLEN NEWRY
BT35 9JD



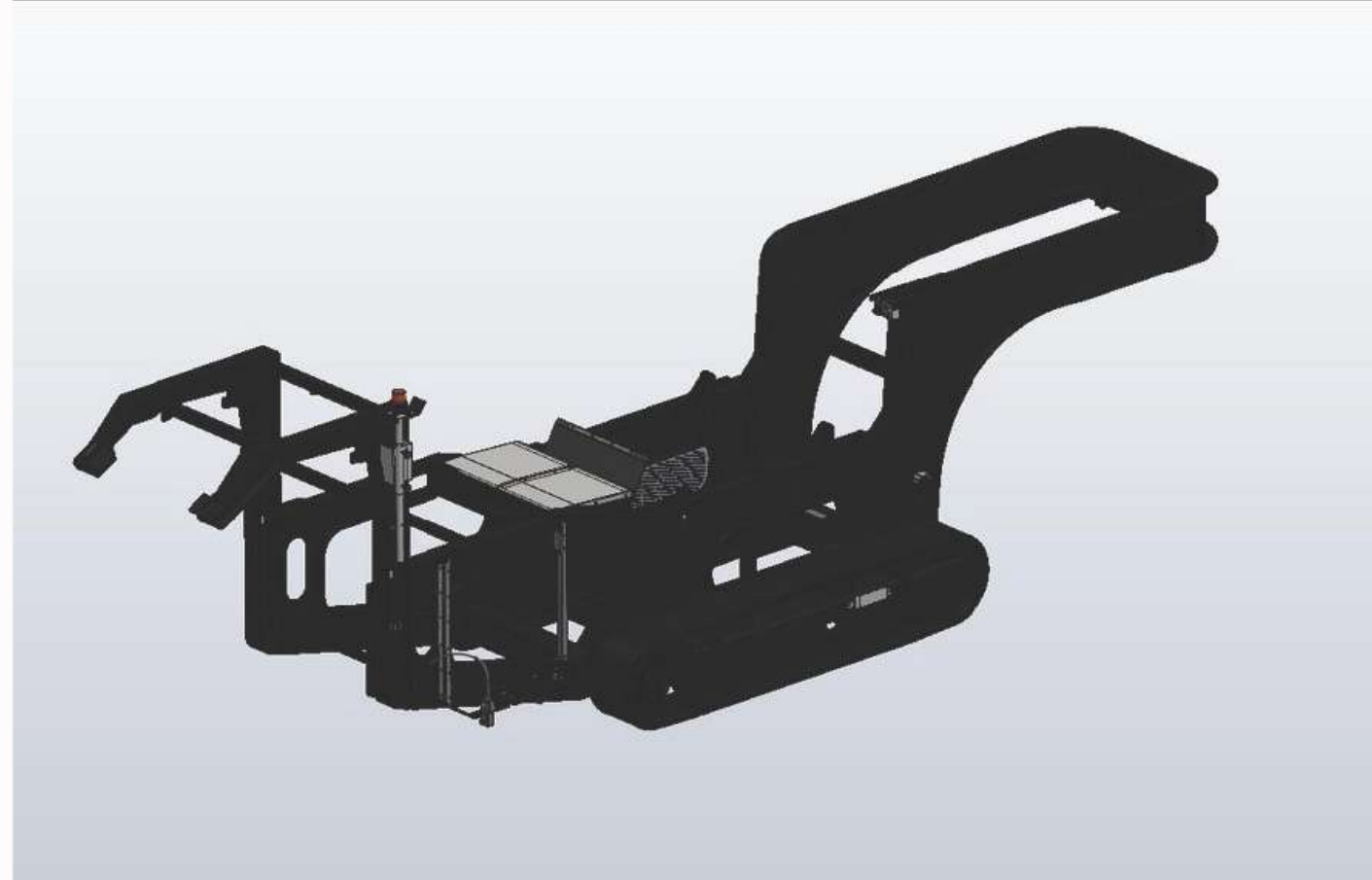
FEATURES & BENEFITS

The Roco RYDER 1000 is a high-performing all electric-driven, dual-powered jaw crusher best suited for crushing hard rock, and abrasive materials along with being super equipped to handle demolition and recycling applications. With Its unique features combined with 100% electric plug-in option, this jaw crusher takes the lead in its class.

- Option To Operate Full Plant 100% electric With On-Site Electricity AS STANDARD. Ideal For Indoor Use Or Silent Operation.
- 40% Fuel Saving In Comparison To Same Class Diesel-Hydraulic Crushers (Engine Running).
- 600mm / 2ft Clearance Under Crushing Chamber (Ideal For Recycling Material).
- Deflector Plate Installed Under Crushing Chamber For Enhanced Belt Protection.
- 180 ° Radial fines / dirt Conveyor.
- Low Noise Set Speed Engine
-
- Ground Level Controls, Hydraulic Lowering Of Discharge Conveyor.
- Accessible Maintenance Service Area And LED Work Lights Installed for enhanced safety
- Automated Feed System For Optimum Crushing Performance And Protection.
- High-Quality Overband Magnet With Left / Right Discharge.
- Permit-Free Movement.



ROCO9 LTD. 205A
CONCESSION RD
CROSSMAGLEN NEWRY
BT35 9JD



CHASSIS

Compact yet robust chassis design that offers the operator maximum advantages when operating and maintaining their RYDER 1000 jaw crusher. Remaining at only 2.55m / 8'4" total width and an overall minimum height of 3.1m / 10' 3" allow for permit-free transportation. With bolted-on 3m / 10' track frames, fitted with oversize 3500cc gearbox drives, combined with 2-speed tracking allows the Ryder to remain very agile on rough terrain. The 2-speed (low speed) while tracking also offers extra torque and safety when loading onto embankments on work sites or transportation trailers. Generous ground clearance at the front and rear of the chassis allows for seamless loading/unloading for transport while also offering greater access to the operator for maintenance.

The lower part of the discharge conveyor is protected by 2 heavy-duty chassis cross beams protecting it from getting damaged by gravel build-up on the ground while tracking. The discharge conveyor can also freely ride up 50mm / 2" in a slotted pin housing which greatly increases its chances of not getting damaged while tracking over materials. Access windows in the chassis combined with a folding feed booth underneath the crushing chamber allow the operator to inspect and clear out any build-up of debris in that area. Dust suppression manifold fitted with 3 x water tap outlets, sprinklers installed to top and bottom of crushing chamber and also on the end of discharge conveyor.

Keeping the power unit on top of the chassis gives it the best chance of not getting damaged in comparison to other compact mobiles that place the engine under the feeder end. More importantly, placing the engine on top decreases the chances greatly of inhaling dust while also keeping cool. By not placing the Power unit underneath the feeder, the design has allowed Roco to offer its 180-degree radial conveyor and easy access to adjustable feeder motors and pre-screen mesh changes. With a practical layout of controls, hydraulics and service points all at ground level, combined with LED work lights, the RYDER chassis design is a joy to perform operations and maintenance on while also creating a safe environment to work in.

Note, all steel structures are earth-linked and all-electric assemblies are connected to a backup earth leakage switch for further enhanced safety.



ROCO9 LTD. 205A
CONCESSION RD
CROSSMAGLEN NEWRY
BT35 9JD



HOPPER

The RYDER 1000 comes complete with a 5m³ / 7 yard hopper capacity as standard. Utilising trouble-free fixed hopper extensions allows for accepting generous feed by wheel loaders, Telehandlers or large excavator buckets. It also eliminates the need for any operator to climb onto the hopper for pinning of extensions as they are permanently fitted.

The main hopper has replaceable 6mm Hardox wear liners installed for further protection and ease of repair. Its tapered design encourages materials to move forward with ease towards the crushing chamber. The 3-piece hopper extensions can be removed individually or all together to reduce feed-in height or for a more desired lower transport dimension if required.

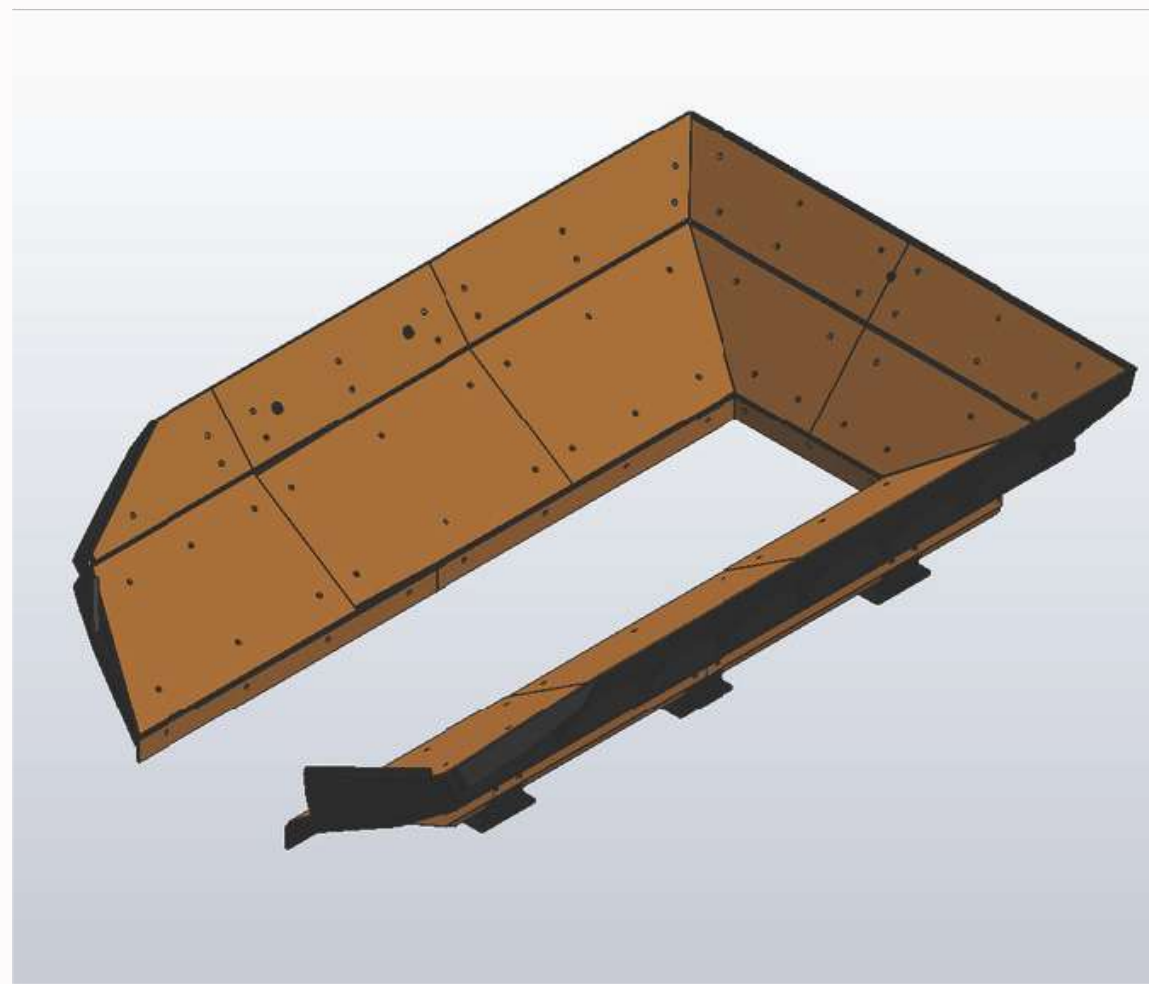
Hopper Dimensions

Length - 3.4m (11' 2")

Width - 2.5m (8' 2")

Height - 3.38m (11' 2") **Extension Fitted** / 3.2m (10ft 8") **Extensions Removed**

Heaped Volume - 5.0m³ (7yd³)

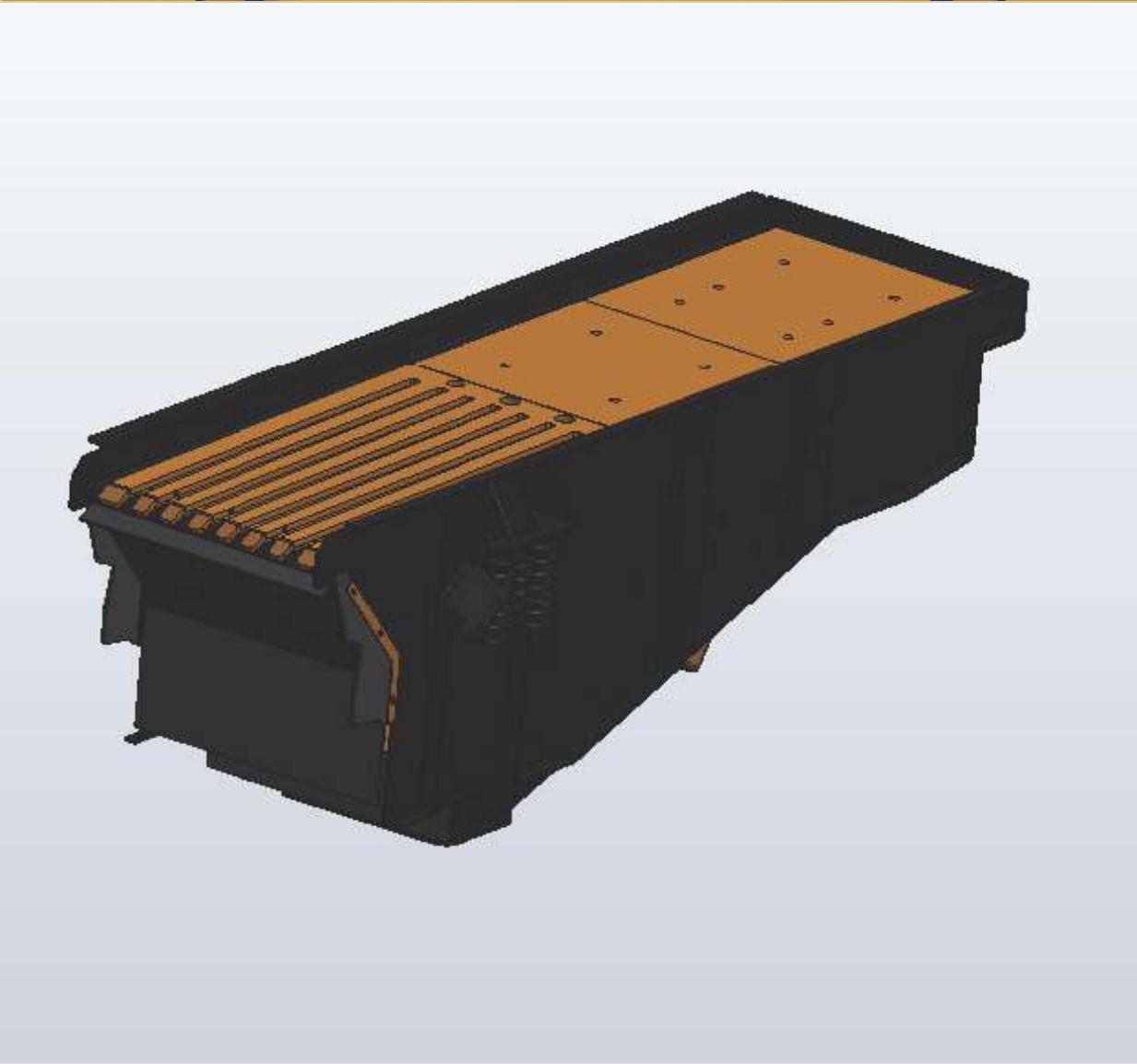




ROCO9 LTD. 205A
CONCESSION RD
CROSSMAGLEN NEWRY
BT35 9JD



FEEDER



The RYDER'S high-energy feeder is driven by 2 x 3.2kw/ 4.5hp 1000rpm vibrating motors with adjustable frequency. The feeder can be set manually or to automatic feed function where it regulates a safe continuous flow of material to the crushing chamber for optimum crushing performance and reduces unnecessary jaw liner wear.

Its 2-deck grizzly system will allow fine material that does not require crushing to bypass the crushing chamber and reduce the wear factor while increasing production. Moreover, the operator can choose to send all materials to the main discharge conveyor via a blanking mat or can choose to utilize the second deck on the grizzly feeder to create a second screened product.

The lower 2nd deck features an interchangeable 1.2m 0.9m / 4' x 3' screen mesh to regulate the size of fine material to exit through the radial fines conveyor. The feeder floor is protected with hard-wearing Hardox 2-piece wear liners that are resting on rubber plates to help ease shock absorption which are also easily replaced when worn.



ROCO9 LTD. 205A
CONCESSION RD
CROSSMAGLEN NEWRY
BT35 9JD



CRUSHING CHAMBER

Overview

- Jog function to assist with safe unblocking
- Snag-free inlet design to encourage throughput.
- High-speed 300rpm crushing performance.
- Oversize 90Kw / 120Hp drive motor with an extra grip 10 groove pulley.
- Extra large opening panel for easy access to inspect or change drive belts.
- High quality 18%Mn long life wear parts as standard
- Reversible Jaw Dies for maximum use
- Generous 40mm-150mm / 1.5" - 6" fast hydraulic wedge adjustment system.
- Proven bolted design and free movement mounting via rubber feet to chassis.
- Suitable for hard rock-crushing applications.
- Adjustable deflector plate on chamber exit to assist with recycling material.
- Full reverse run option.
- Central greasing point.
- High-quality 'Hydac' accumulator and hydraulic pressure sensor to protect toggle cylinder from damage.
- Selection of various jaw dies.
- Intermittent 4kw motor / hyd pump to hold correct CSS setting.
- Excellent 600mm (2') clearance to discharge conveyor

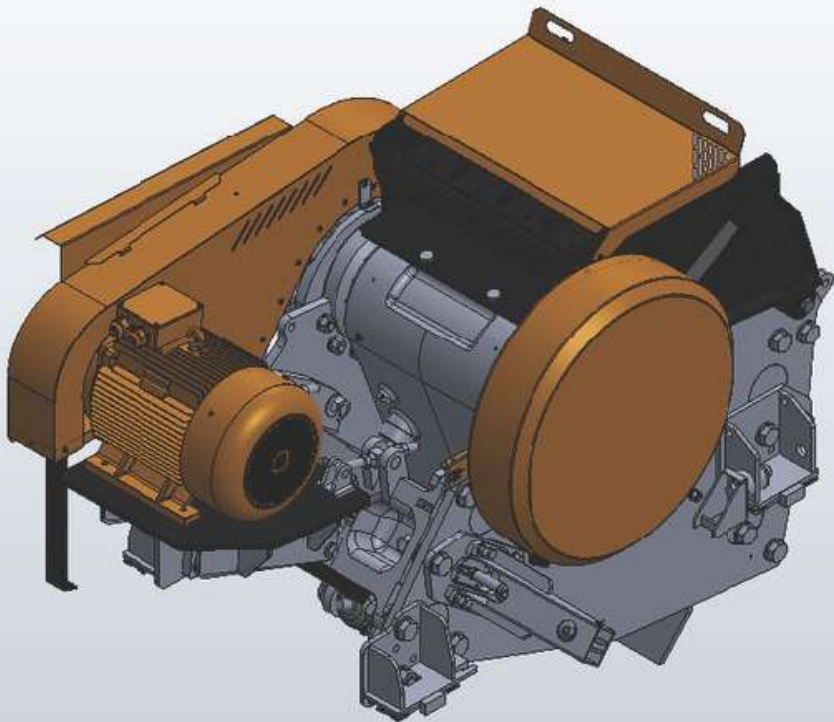
05

Sales Guidelines



**ROCO9 LTD. 205A
CONCESSION RD
CROSSMAGLEN NEWRY**

BT35 9JD



06

Sales Guidelines

CRUSHING CHAMBER

The heartbeat of the RYDER 1000 - Utilizing proven crushing technology, the RYDER 1000 delivers exceptional throughput performance in both recycling while excelling in hard rock aggregate applications. With a robust oversize 90kw drive motor and large flywheels operating at 320rpm, it establishes a very powerful and economical crushing geometry that can handle natural hard rocks and abrasive applications with ease.

The incorporation of long-life 18%Mn wear parts and reversible jaw dies translates to reduced labour costs and minimal downtime for operators. The crushing chamber also comes complete with an adjustable deflector plate installed underneath the exit area to assist with crushing steel-contaminated recycled material with re-bar and to enhance further discharge belt protection. Its fully hydraulic adjustment system allows for quick and easy customization of end products without any manual labour required. By the touch of a button and with a visual aspect from the crusher maintenance platform the operator can adjust their desired output size in under 1 minute.

Fitted with a fully hydraulic adjust wedge type system and with the use of a high-quality 'Hydac' accumulator and pressure sensors, the toggle adjustment cylinder is protected from high-impact sudden blows. The hydraulic pressure sensor will also protect the crusher box and deactivate the feeder system in the event of a hydraulic failure. The Ryder 1000 chamber utilizes a simple and economical replaceable toggle plate design which prevents it from serious damage should tramp metal / or an uncrushable object enter the chamber. Further protection for the chamber is achieved by a monitoring Amp meter which is installed to the 90Kw crusher drive motor preventing overloading when hard materials are detected. The chamber is also fitted with an on/off Ultrasonic level sensor which keeps the chamber at optimum feed level.

With a full reverse work option on demand as standard, this function further assists the operator while crushing sticky and dirty material or for the processing of (RAP) recycled asphalt paving. For enhanced protection, there is a time delay function in place while selecting forward / reverse movement.

Last but certainly not least, the RYDER is equipped with a Jaw 'Jog' function. This serious unique asset allows the operator to rock the jaw chamber back or forward in the event of an emergency shutdown or onboard failure. When the chamber is full of material, traditional crushers must be manually emptied before start-up can commence which is a serious health hazard as it is NEVER advisable to enter a crushing chamber. In this instant, The Ryder will allow the operator to fully open the jaw CSS and perform the Jog function which in turn will empty the chamber completely of uncrushed materials. The jaw can then be adjusted back to the required size and crushing can safely commence without any need whatsoever for manual labour or any health risks.



Sales Guidelines

CRUSHER TECHNICAL

FEED OPENING WIDTH MM (IN)	930 (37)	
FEED OPENING DEPTH MM (IN)	600 (24)	
POWER kW (HP)	90 (125)	
SPEED (rpm)	300	
PRODUCT SIZE MM (IN)	CLOSED SIDE SETTING MM (IN)	Mtph (Stph)
0-90 / 4"	40 mm/ 1.5"	40-60
120 / 5"	60 mm / 2.1/4"	60-90
150 / 6"	80mm / 3"	80-100
180 / 8"	90mm / 3 .5"	100-125
250 / 10"	100mm / 4"	125-170
350 / 14"	125mm / 5"	150-180
450 / 18"	150mm / 6"	170-200
500 /20"	180mm / 7"	180-220

The RYDER Arch only for sofufed at hial packies abt hial ways goes sterted for mailed se cting st at h as to for my clud ed CAS are st and th Th is M h i p u t r s e t t i n g by not being able to escape the chamber.

The above figures represent throughput crusher capacities, which are based on a feed material with an average specific gravity of 1.6-1.8 t/m³. For average aggregates, calculate density at a maximum feed size that will enter the crusher without bridging and material finer than the crushers closed side setting removed. The capacities may vary depending on the feeding method and on feed characteristics such as gradation, bulk density, moisture, clay content and crushability.

Measurement of the crusher's closed side setting varies depending on the jaw profile being used and impacts the crusher's capacity and product gradation. The following factors will enhance crusher capacity and performance.

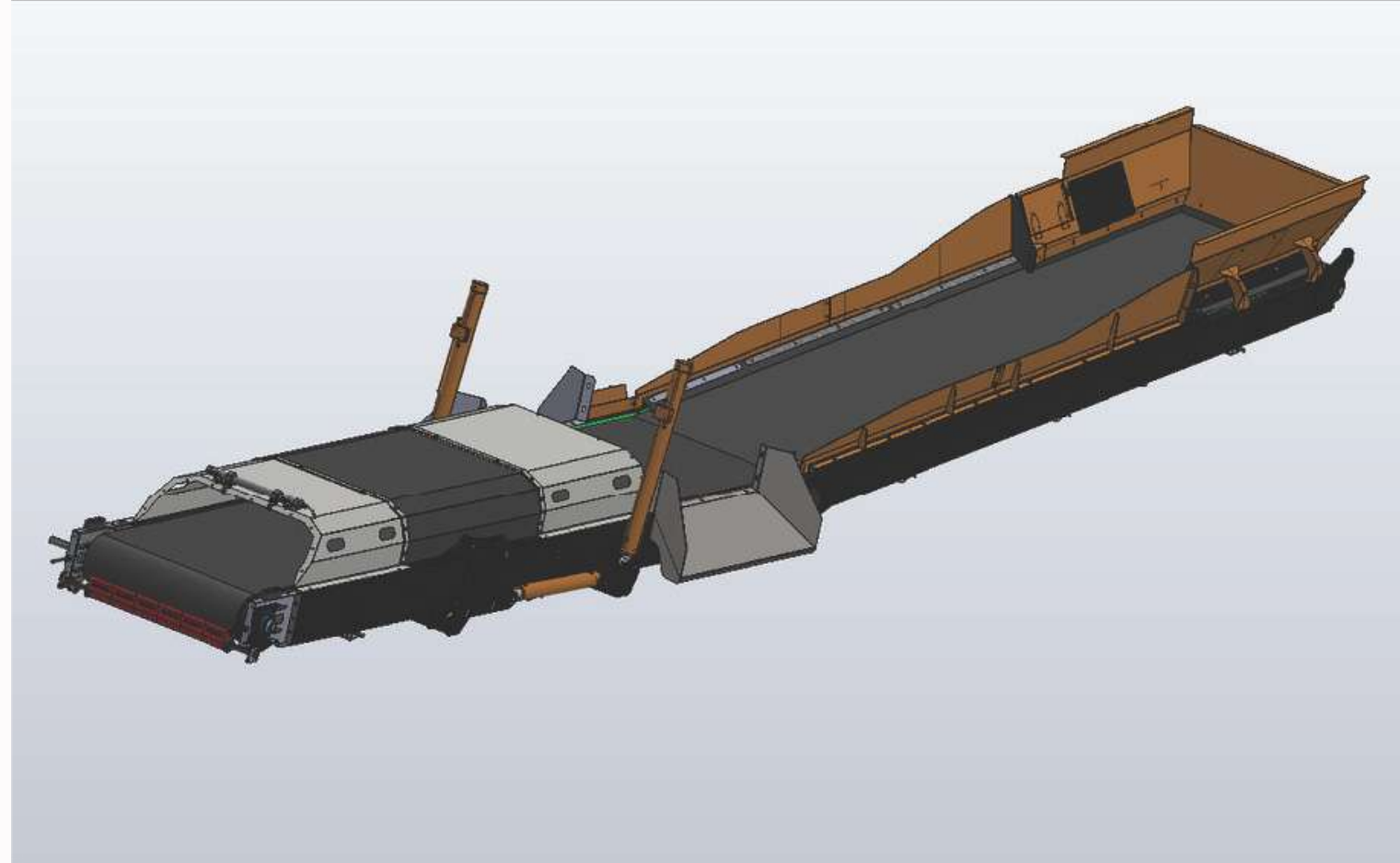
1. Proper selection of jaw dies and conditions of wear
2. Correct feed gradation
3. Controlled and continuous feed rate from Excavator
4. Correct feeding procedure to maximise grizzly screening.

For a performance estimation for your specific application, please contact Roco Support.



ROCO9 LTD. 205A
CONCESSION RD
CROSSMAGLEN NEWRY

BT35 9JD



MAIN PRODUCT CONVEYOR

A generous oversized 1000mm (40") discharge conveyor prevents spillage and a clear path for the crushed material to exit the chamber. Driven by a high torque 5.5kw / 7.5hp electric motor and reduction gearbox operating at 1.25m / 4ft p/s the main conveyor effortlessly handles high tonnage demand. Fitted with a full impact bed area directly below the crushing chamber and with the assistance of the crusher deflector plate, the discharge conveyor is highly protected from falling materials and harmful steel re-bar. With a very generous 600mm / 2ft clearance underneath the chamber, steel metal is prevented from nesting in that area. Access to rear feed booth area is enhanced through a chassis window fitted with a removable panel.

With the use of hard-wearing polyurethane wear strips instead of the traditional troublesome wing rollers, the high-quality heavy-duty 4-ply conveyor is protected from rollback materials entering inside the conveyor and centre rollers. Top-quality replaceable teardrop scrapers and internal plough scraper are installed for further maximising the life expectancy of the belt.

With the use of hydraulic cylinders, the discharge conveyor can be lowered for ground-level maintenance while creating super access for any maintenance procedures, the discharge conveyor also has a hydraulic folding head section for shortened transport dimensions. With a snag-free tunnel-like design on the discharge side walls, steel rebar and bulky materials are prevented from getting caught or causing any damage to the surrounding chassis or structures. Central greasing point and triple sealed bearings as standard enhance uptime. Full powdercoated dust covers, combined with dust suppression sprinkler bars installed at rear and head section for maximum dust suppression control.

As a safety precaution, should the discharge conveyor stop for any reason during use, then the crusher chamber and feeder system will automatically stall to prevent any further build-up of material entering the discharge conveyor. The central greasing point at ground level.

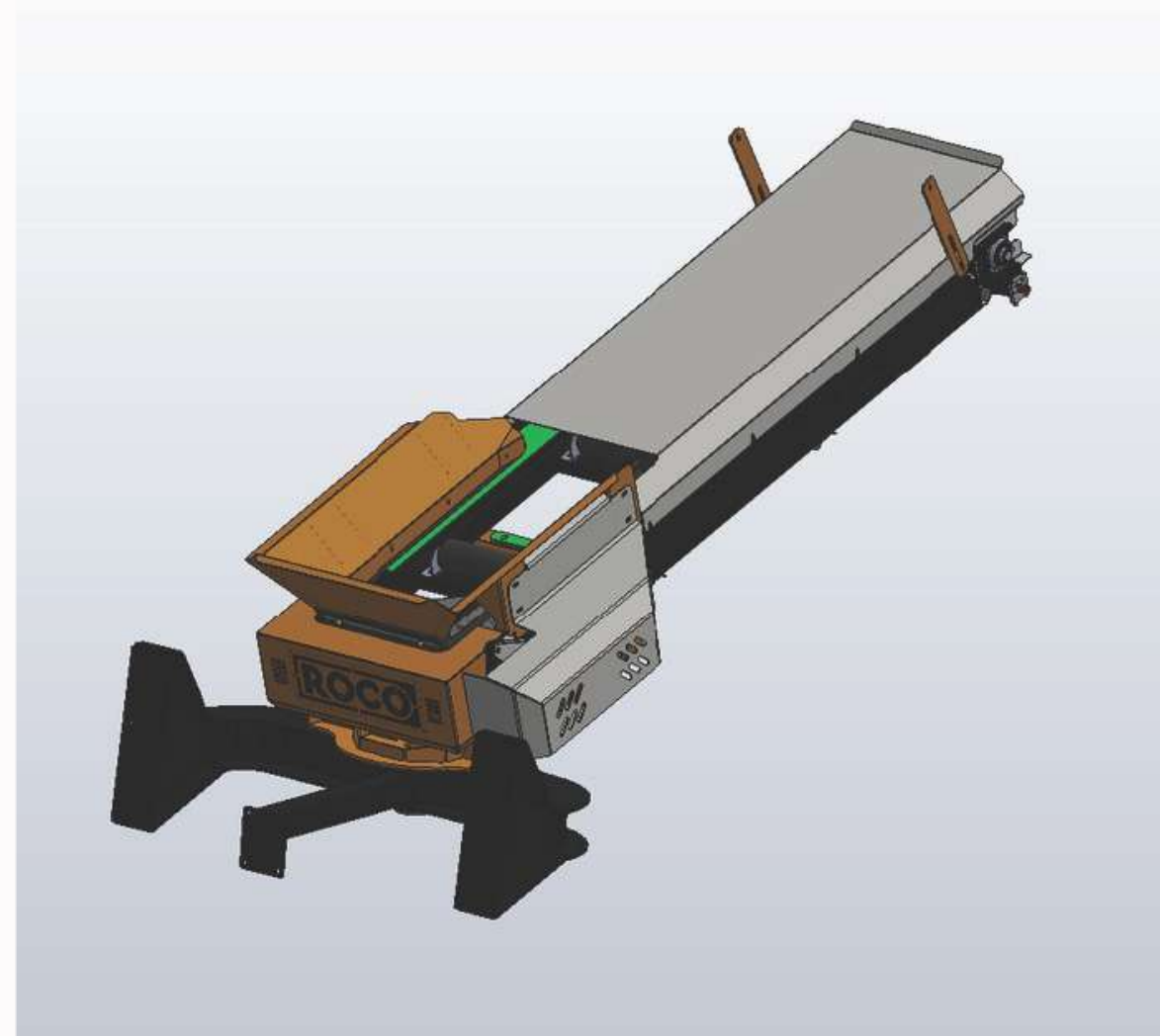


ROCO9 LTD. 205A
CONCESSION RD
CROSSMAGLEN NEWRY

BT35 9JD



RADIAL CONVEYOR



The RYDER 1000 features a very versatile 180° 600mm / 2ft wide radial fines conveyor, providing operators with extensive left or right flexibility for efficient stockpiling or seamless transfer of their preferred fines material in confined spaces. For added convenience, the radial conveyor can be held in any position when chosen to be bypassed. Fine material will still fall through the top grizzly and bypass the jaw however, material is prevented from exiting the side conveyor by a blanking mat fitted over the second deck mesh.

At ground level, a robust 3kw / 4hp motor and gearbox with a set speed of 1.75m / 5ft p/s drive the conveyor while hard-wearing polyurethane wear strips replace wing rollers for enhanced durability. The conveyor is further optimized with top-quality teardrop scrapers and the installation of a full powdercoated dust cover.

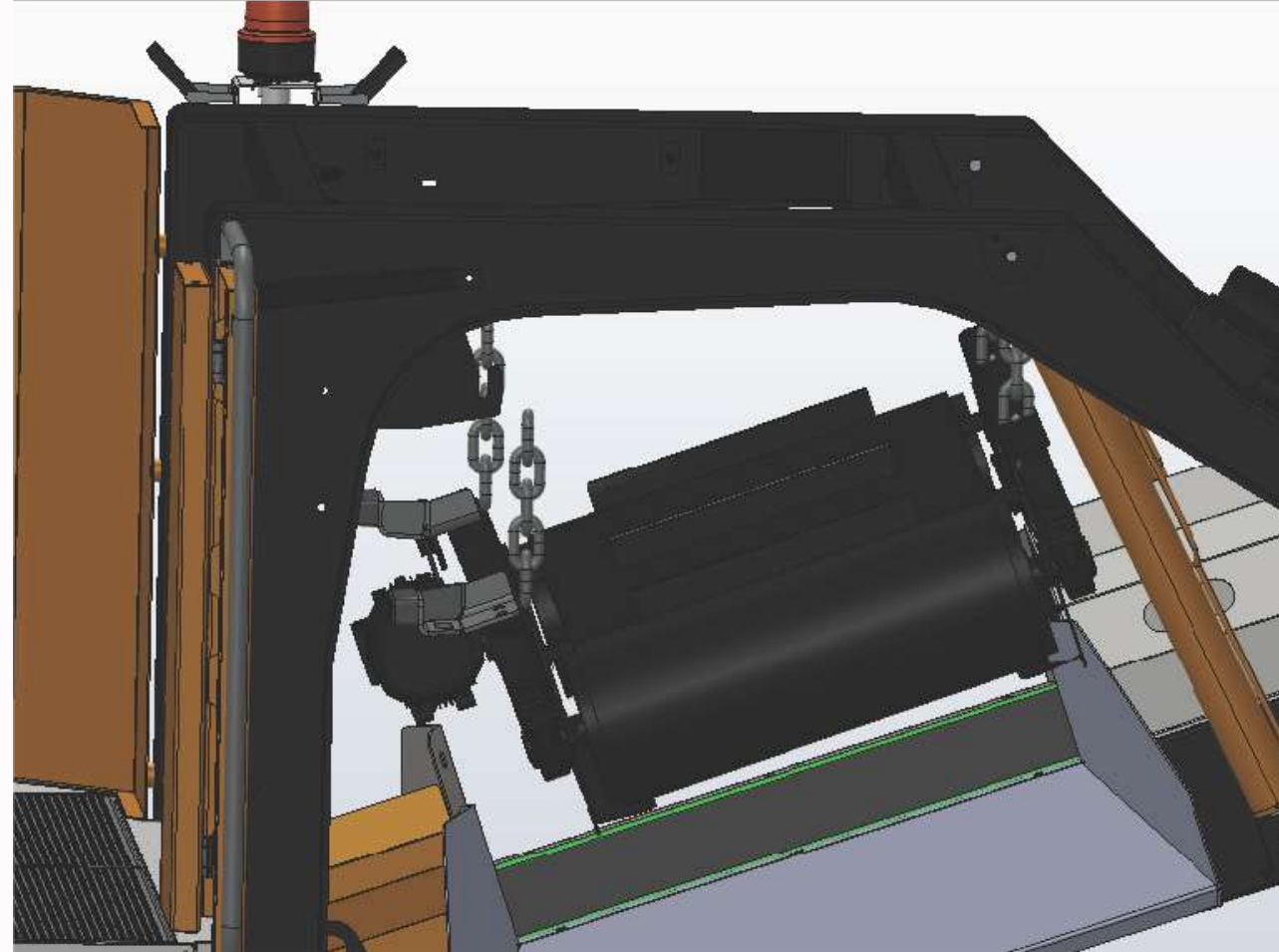
The radial conveyor and overband Magnet both have the option to discharge left or right meaning super flexibility in tight confined work sites, meaning the operator can set up the Ryder in their desired working area without delay. Manual locking pin and fasteners installed to secure during transportation. Central greasing point at ground level .

09

Sales Guidelines



ROCO9 LTD. 205A
CONCESSION RD
CROSSMAGLEN NEWRY
BT35 9JD



OVERBAND MAGNET

A high-quality overband self-cleaning magnet is seamlessly integrated into the RYDER design to efficiently remove ferrous metals from the crushed product. The system is powered by a reliable 1.5kw / 2hp electric motor and gearbox with built-in overload protection, ensuring safe and consistent operation.

Operators have the flexibility at the touch of a button to discharge separated metal either to the left or right side of the crusher through stainless steel chutes which are fitted to both sides as standard. Operators can easily place a collection bin / skip underneath the chute work to effortlessly collect the rejected metals without the need for manual labour.

The 750mm / 30" wide cleated belt is designed for optimal performance in handling all sizes of ferrous materials. Additionally, the system offers the convenience of raising or lowering the magnet via an adjustable chain link, providing operators with precise control over the separation process.

In applications with vast amounts of metal, the operator also has the option to lower the main discharge conveyor to the desired height to achieve maximum efficiency of metal removal without the fear of metals nesting or snagging underneath the magnet.



ROCO9 LTD. 205A
CONCESSION RD
CROSSMAGLEN NEWRY

BT35 9JD



POWER UNIT

Featuring a tailored, in-house built power unit bespoke designed for the RYDER, the Power unit delivers exceptional efficiencies suited for all environments. The powerful Engine and Alternator (Genset) is built inside a fully enclosed galvanised steel powder-coated canopy. This super silent acoustic insulated canopy has an exceptionally low running noise of only 88dBa, The RYDER’S Power unit is shielded from all-weather elements and fitted with an oversize tropical cooling system suitable for working in hot climates. Combined with extensive testing, airflow is pulled from one end of the canopy to the other to maintain optimum internal working temperatures. Special louver designs allow seamless airflow but help prevent any ingress of dust and moisture.

STG-V - (EU) - 155Kw @ 1500rpm - 50Hz - 180KVA
T4F / STG-V - (USA / CANADA)- 186Kw @ 1800rpm - 60Hz - 210KVA
(Standard 2 year warranty directly via your local Cummins agency)
T3 - (ROW) - CAT C7.1 155Kw / 185Hp @ 1500rpm (Standard 1 year warranty directly via your local Caterpillar agency)

Alternator Model: Leroy Somer LSA- with winding abrasive air protection applied for enhanced dust and moisture protection.
Gen Rated: 50hZ / 60Hz compatible.
ABB 4-pole Local Generator Mounted Circuit Breaker. DSE 7310 Auto start controller mounted inside the canopy, with engine, voltage and frequency protection built in.
Additional, AREP is fitted to the alternator for independent AVR steady voltage control.

Note

All RYDER builds are compatible to work globally utilizing onboard diesel power or via local power supply.



ROCO9 LTD.
205A CONCESSION RD
CROSSMAGLEN
NEWRY
BT35 9JD



POWER UNIT CONT.

Engines and alternators (gensets) are internally rubber mounted to allow for any shocks or stresses while crushing.

In the event of any major overhaul, the complete power unit can be easily dismantled from the plant. Connection to the control panel from the onboard generator is via colour-coded Power-Lock quick releases therefore enabling safe disconnection of the power unit in under 1 minute from the control panel.

Generous access to all areas of the power unit are achievable via 2 service platforms fitted to both sides. There are removable and hinged doors on both sides of the canopy for the ease of any maintenance procedures. Cleaning of the Cooling system/radiator is also accessible via a hinged access door while daily checks can be performed through smaller openings. Service points for both oil and coolant drain-off are externally located at ground level aiding the operator and helping prevent waste spillage but also resulting in safer and faster service times.

The RYDERS bespoke Power unit system allows for unrivaled fuel efficiency which is typically 40% more efficient than traditional diesel-hydraulic crushers.

Recycling applications: 8-10 litres / 2 Gal fuel burn per working hour

Hard Rock applications: 10-14 litres / 2-3 Gal fuel burn per working hour

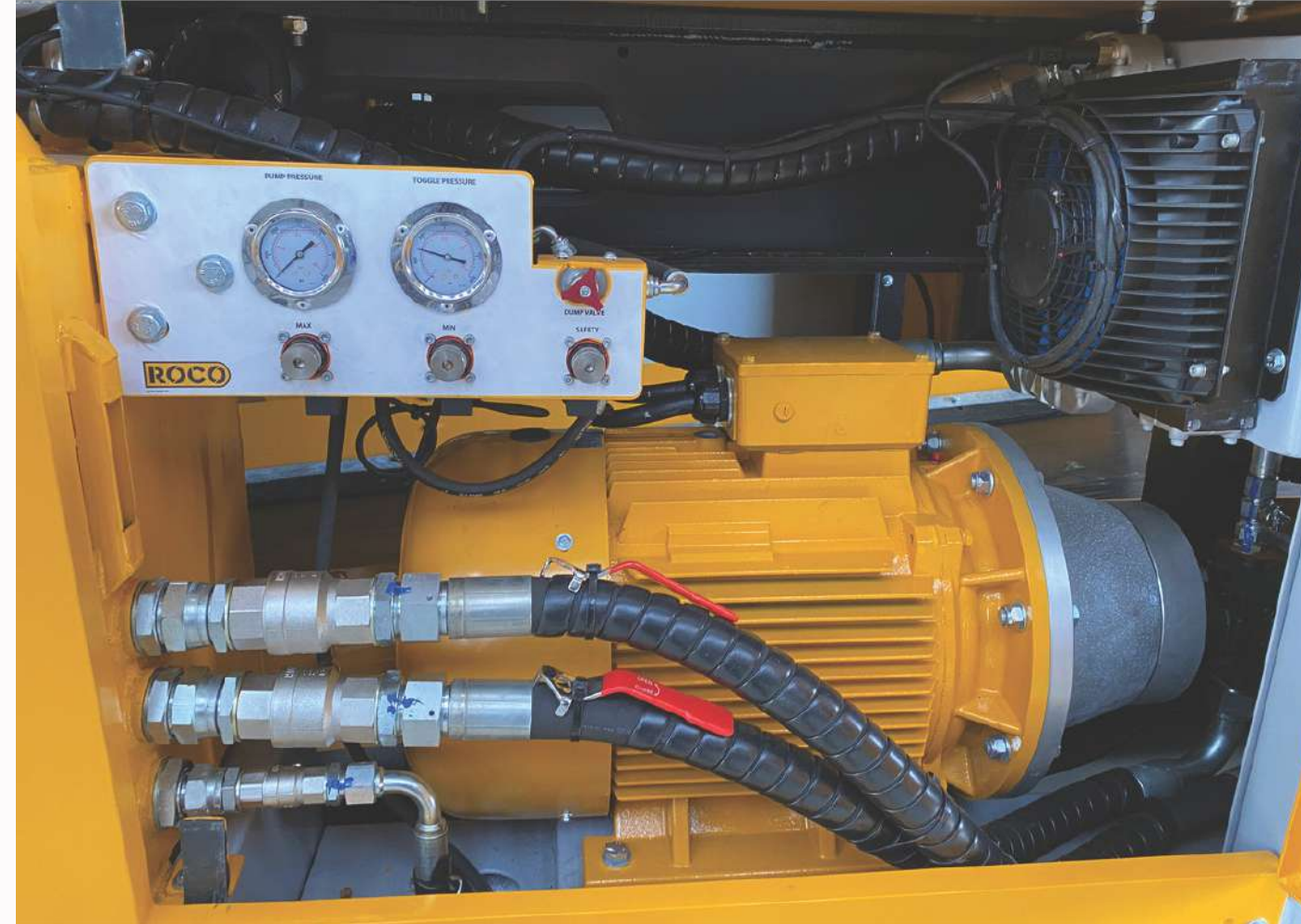
Note. Zero fuel burn while connected to local electric supply (Plugged-in)

All Power units are fully tested to 100% load capacity with an in-house load bank simulator, ensuring max working performances are met before installing onto the crushing plant. Canopy and internal designs have also been tested and approved by OEM engine suppliers meaning more comfort for after-sales support and warranty claims.



ROCO9 LTD. 205A
CONCESSION RD
CROSSMAGLEN NEWRY

BT35 9JD



DEPLOYMENT/ HYDRAULIC POWERPACK

A powerful 37Kw / 45Hp motor coupled with an aluminum bell housing drives Tandem hydraulic pumps.

All hydraulic procedures are performed using the onboard Electric / Hydraulic powerpack at the touch of a button from the operator's panel. This hydraulic system is only used for deployment and does not operate while the machine is crushing which further enhances efficiencies and has no risk of hydraulic failures or burst pipe hazards while crushing onsite. The tandem pump is designed to offer maximum oil flow and pressure to drive the 2-speed tracking system as each track has its own independent pump.

Hydraulic lowering and folding of the discharge conveyor is performed through a 2-bank lever system while the Hydraulic powerpack is active. A thermostatically controlled oil cooler also works in line with the system to keep oil at optimum temperatures while long-distance tracking procedures are required in hot climates.

The hydraulic tank reservoir is also fitted with a low-level sensor which offers protection to the powerpack and prevents it from functioning in the event of a low oil level warning.

A much smaller 4kw powerpack can also be found underneath which is solely used to energize the crushing chamber hydraulic adjust system when required. This small powerpack is regulated by a low-pressure sensor and should the hydraulic pressure in the system drop or alternate after adjusting the crusher opening/gap, then it will automatically recharge the system to the correct working pressure. There is also an oil dump function for carrying out toggle plate maintenance procedures safely.



ROCO9 LTD. 205A
CONCESSION RD
CROSSMAGLEN NEWRY
BT35 9JD



CONTROLS

Practicality is so important when it comes to a functioning machine and the RYDER panel assists the operator in every aspect. We understand machines can be part of rental fleets or large companies with many operators so the operator's control panel was designed to easily function for even novice owners.

Using a colour-coded and labelled number system allows even strangers and multi-language users the easy procedure of starting and operating the RYDER 1000 safely. The control panel is IP66-rated and comes with double locking doors for improved sealing. It is then further supported via a double fixing back plate while also supported underneath by 2 sturdy steel and anti-vibration rubber mountings.

Depending on the task, any operator can choose to start up the crushing procedure Automatically (Green) where all motors will start in the correct sequence or they also have the option to manually (Blue) start each individual motor drive which is very useful for testing certain components or carrying out maintenance procedures. All deployment procedures of the machine are performed through the (Yellow) hydraulic powerpack mode when selected. For safety reasons, it is not possible to track and crush at the same time.

In the event of any onboard fault, the failed electric drive will display a red light highlighting which electric component has stopped for quick and easy troubleshooting. Each electric motor is controlled through a contactor/breaker which trips in the event of an overload or failure for enhanced safety. This function is excellent in the event of a conveyor or magnet belt getting stalled by a large piece of tramp metal as it will stop operating when under too great of a load. For example, on hydraulic driven crushers the belt will continue to spin and operate as normal resulting in a totally ripped and unusable belt which will need to be replaced.

Another serious benefit to the operator, all internal connections are linked, meaning in the event of a discharge belt stopping for example the controls will shut off the feeder to prevent more materials from entering the crusher / stalled belt.



ROCO9 LTD. 205A
CONCESSION RD
CROSSMAGLEN NEWRY
BT35 9JD



CONTROLS

Every electrical component and all cables inside the control panel are labelled and numbered for ease of problem-solving while also accompanied by a wiring schematic. All internal components are from highly reputable recognised OEM global supply partners.

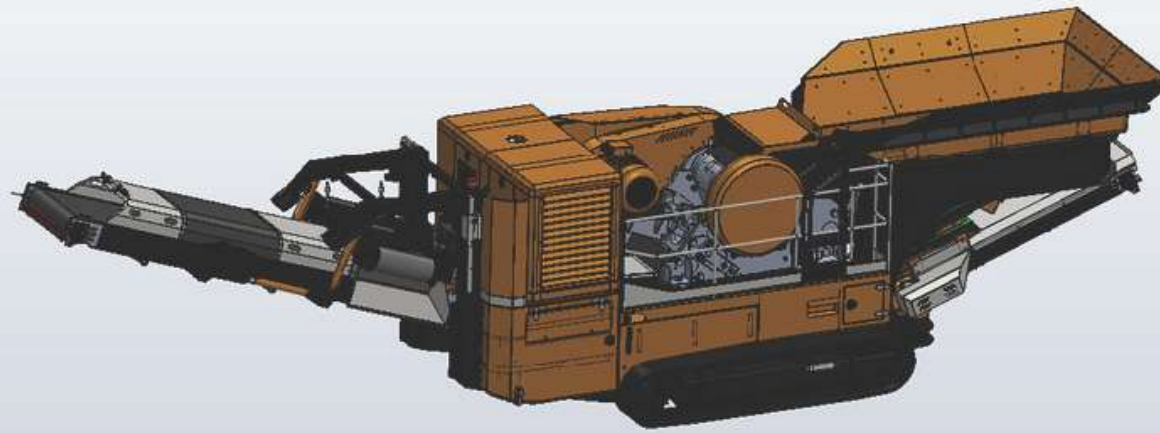
Being a Diesel-Electric machine this offers the customer a dual powered run option. They can choose to utilise the super efficient onboard Power unit while working remotely or the option to run 100% from an external electric supply where available. This function is best utilised for carbon-monoxide-free working conditions. (i.e) In-door recycling centres, underground tunnels or even in noise-restricted urban areas. The RYDER 1000 is 100% electric driven, unlike most competitors that use direct engine-driven crushers or traditional diesel hydraulic builds. Inside the control panel, there is also an analogue clock for counting the crusher box running hours, this is required for maintenance when running on mains electricity, meaning greasing intervals can also be monitored.

To operate in full electric plug-in mode the control panel functions remain the same in any case. For enhanced safety, colour-coded Quick-release power locks are installed to the control panel's external front, allowing the operator to disconnect the onboard generator cables safely (also colour-coded) and then insert their onsite power cables into the same power lock connections.

Additional quick-release colour-coded power locks will be supplied with the machine for onsite connections with the correct country region colour scheme. External power connection points result in further enhanced safety, no operator needs to enter inside the control panel at any point.



ROCO9 LTD.
205A CONCESSION RD
CROSSMAGLEN
NEWRY
BT35 9JD



STANDARD SPECIFICATION

The RYDER 1000 comes complete with all the following specification included as standard.

- Full electric plug in option to operate the plant by external electric supply
- Reverse Crushing Option.
- Unblocking Crusher Jog function.
- Adjustable Height Overband Self-Cleaning Magnet (Multi-Directional & 2x Discharge Chutes).
- Raise And Lower Discharge Conveyor and folding head section.
- Dust covers installed to full Discharge and radial fines conveyors
- Dust Suppression Sprinklers On Crusher Inlet, Outlet & Discharge Conveyor Head Section, 3x Tap Manifold.
- Colour Coded Powerlock Quick Release Connections for Permanent Power Supply (400-480V - All Regions)
- 180 ° Radial Dirt Conveyor With Option To Bypass Fines To Main Discharge Conveyor.
- LED Work Lights On Adjustable Lighting Poles at Front And Lighting at Hopper End.
- Removable Hopper Extensions.
-
- Pre-Screen Mesh Installed To Feeder 2nd deck Beneath Grizzly.
- Central Greasing Points.
- 2 Speed Tracking With High Torque Drives.
- Hardox Lined Feeder & Hopper.
- 4 Ply Heavy Duty Discharge Conveyor.



ROCO9 LTD. 205A
CONCESSION RD
CROSSMAGLEN NEWRY
BT35 9JD



OPTIONAL EXTRAS

Overview

The RYDER offers the flexibility to customize and enhance its capabilities to meet your specific requirements. Consider the following optional extras for a tailored solution:

- Head Drum Dust Cover on Discharge Conveyor
- Auto-greasing System
- Radio Control - Feeder.
- Radio Control - Tracks.
- Weigh Loader Scales .

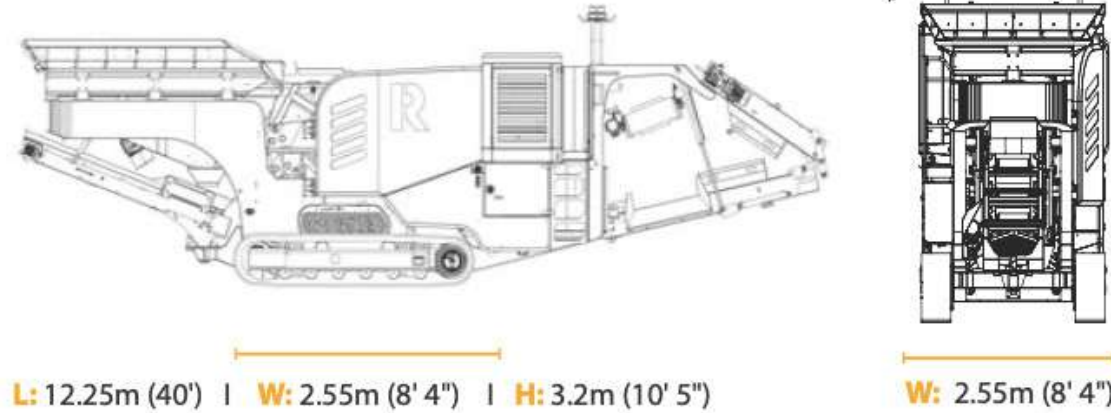




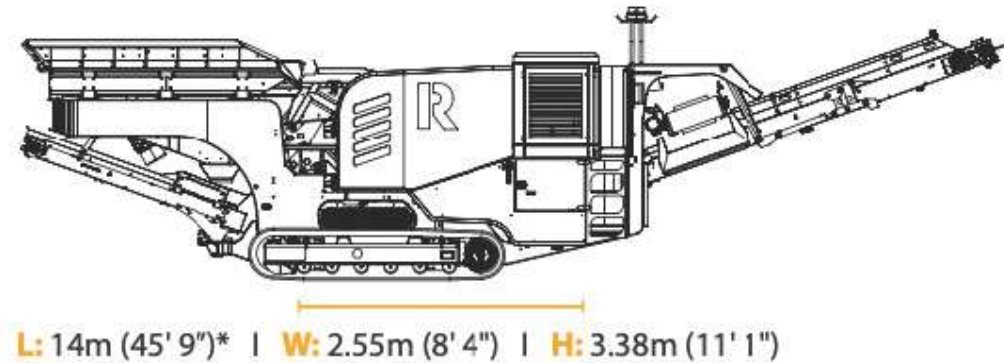
ROCO9 LTD. 205A
CONCESSION RD
CROSSMAGLEN NEWRY

BT35 9JD

TRANSPORT



WORKING



DIMENSIONS

Overview

- Length - Transport 12.2m (39' 4")
- Length - Working 14m (45' 11")
- Width - Transport 2.55m (8' 4") Radial Conveyor In Transport Position
- Width - Working 2.55m-3.2m (10' 6") - Radial Conveyor In L/R Working Position
- Height - Transport 3.2 (10' 5") - Hopper Extensions Removed, 3.38m ext fitted
- Height - Working 3.38m (11' 2")
- Weight - 29,50kgs (65,000 lbs.) Standard build
- Easily Transported By Standard Trailer / Low Loader permit free.



ROCO9 LTD. 205A
CONCESSION RD
CROSSMAGLEN NEWRY

BT35 9JD

COMPETITIVE ANALYSIS

STANDARD SPECIFICATION		ROCO	METSO / MCCLOSKEY			KLEEMAN	TEREX				
	Feature	RYDER 1000	J35	J40	TESAB 600i	MC100i	Powerscreen Metrotrak	Evoquip 280	Finlay 960	Finlay 1160	Powerscreen 330
General	Transport Length	12m	9.3m	13.8m		13m	12.4m			15.5m	
General	Transport Width	2.5m	2.5m	2.5m		3m	2.4m			2.6m	
General	Transport Height	3.2m	3m	3.2m		3.2m	3.2m			3.4m	
General	Weight	29,500kg	22,650kg	34,600kg		35,000kg	27,000kg			35,090kg	
General	Output Capacity	200tph	-	280tph		220tph	200tph			250tph	
General	Fuel Consumption (p/h)	10L (AVG)	20L	25L		17L	19L			27L	
General	Two Speed Tracks	Standard	N/A	N/A		N/A	N/A			N/A	
General	Dust Suppression water sprinklers	Standard	Optional	Optional		Optional	Optional			Optional	
General	Dust Covers	Yes - Standard	Optional	Optional		Optional	Optional			Optional	
Hopper	Capacity	5m³	2.8m³	4m³		3.2m³	3.6m³			5m³	
Hopper	Loading Length	3.3m	2m	3m		3m	2.8m			3m	
Crusher	Size (Min Inlet)	960mm x 600mm	890mm x 500mm	980mm x 610mm		950mm x 550mm	875mm x 550mm			990mm x 600m	
Crusher	Reverse Run Option	Yes - Standard	Yes	Yes		No	Yes			Yes	
Crusher	Automatic Feed Sys	Yes	-	-		Yes	N/A			Optional	
Crusher	Drive Motor	Electric 90kw	Hydraulic	Hydraulic		Direct-Engine	Hydraulic			Hydraulic	
Crusher	Hydraulic Adjust	Yes	Yes	Yes		Yes	Yes			Yes	
Crusher	Speed	320rpm	300 rpm	300 rpm		N/A	N/A			N/A	
Crusher	Unblock / Jog Function	Yes	No	No		No	No			No	
Conveyors	Discharge Belt Width	1m (40")	800mm	900mm		1m	800mm			900mm	
Conveyors	Discharge Stockpile	3.2m	3m	3.3m		3m	2.9m			3.5m	
Conveyors	Hydraulic Folding	Yes	No	No		No	No			No	
Conveyors	Fines Belt Width	600mm	500mm	600mm		500mm	600mm			650mm	
Conveyors	Fines Stockpile	2m	2.6m	2.5m		2.1m	2m			2.1m	
Conveyors	Fines Conveyor	Yes - Standard Radial	Optional - Fixed	Optional - Fixed		Optional - Fixed	Optional - Fixed			Optional - Fixed	
Magnet	Overband	Standard (Bidirectional)	Optional	Optional		Optional	Optional			Optional	
Engine	Model	Cummins 6.7	Volvo D5	Volvo D5		John Deere Diesel	CAT C6.6			CAT C7.1	
Engine	Power	155kw	162kW	166kW		155kW	140kW			205kW	
Engine	Speed	1500rpm	1800 rpm	1900 rpm		1500rpm	1800 rpm			1800 rpm	
Power Unit	Hybrid Power Delivery	400v / 480v	N/A	N/A		Optional	N/A			N/A	
Power Unit	Fuel Tank	400L	280L	465 L		N/A	400 L				
Power Unit	Dual Power	Yes - Standard	No	No		No	No			No	
Power Unit	LED Lighting	Yes - Standard	Optional	Optional		Yes	Optional			Optional	
Power Unit	100% Electric Plug-In	Yes	N/A	N/A		N/A	N/A			N/A	



ROCO9 LTD. 205A
CONCESSION RD
CROSSMAGLEN NEWRY

BT35 9JD

CONTACT DETAILS

How to reach out

Phone Number

+44 28 3086 8833

Email Address

sales@roco9.com

Website

www.roco9.com